

**CASE STUDY**  
FOCAL CALCIFIC  
LESION

**DYNAMX**  
CORONARY BIOADAPTOR

**CASE OVERVIEW**

- Focal Calcific Lesion treated with DynamX Coronary Bioadaptor
- Case performed by Antonio Colombo, MD Humanitas Research Hospital, Italy
- Outcomes:
  - DynamX demonstrates acute performance similar to DES
  - With proper vessel preparation patients will experience the benefits of DynamX

**PATIENT HISTORY**

**Demographics**

- Age: 60 years old
- Gender: male
- BMI: 28

**Risk Factors**

- Dyslipidemia (LDL 171 mg/dL)
- Smoker

**Clinical History**

- BPH
- 4 months hx of effort angina CCS II
- Creatinine 1.0 mg/dL

**Diagnostic tests**

- Inferior q waves
- TTE: inferior & posterior septum hypokinesia, LVEF 58%
- Minimal carotid artery intimal thickening
- SPECT: inferoseptal reversible defect
- S/p 2 DES on mid-prox LAD for diffuse critical disease; residual prox RCA CTO

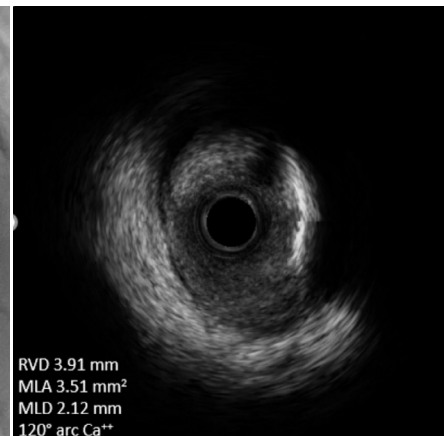
**LESION**

- Mid LAD
- Focal calcific lesion



**BASELINE**

- RVD 3.91 mm
- MLD 2.12 mm
- 120° arc Ca++



**LESION PREPARATION**

Cutting Balloon 3.0 mm x 10 mm at 20 atm

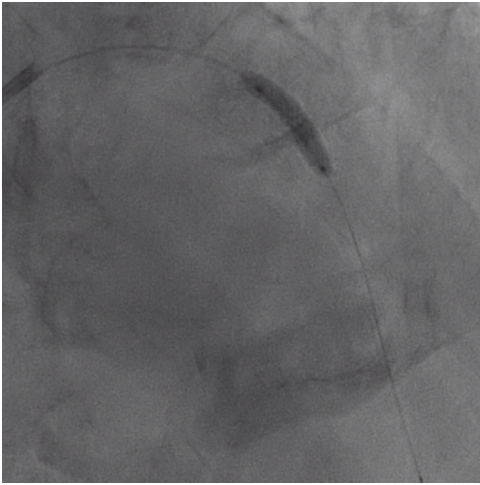


**CASE STUDY**  
FOCAL CALCIFIC  
LESION



## BIOADAPTOR IMPLANT

DynamX bioadaptor 3.0 mm x 14 mm at 14 atm  
Post dilation with non-compliant balloon 3.5 mm x 8 mm at 22 atm



## FINAL RESULT

MLD increased from 2.12 mm to 3.44 mm. MSA 9.40 mm<sup>2</sup>



International (OUS) Use Only. CAUTION: The law restricts these devices to sale by or on the order of a physician. Indications, contraindications, warnings and instructions for use can be found in the product labeling supplied with each device. Case study offered by the physician is based on their experience and is at their discretion. Medical decisions for your patients are to be based upon their condition and your medical judgment.

Elixir and DynamX are registered trademarks in the US and internationally for Elixir Medical Corporation.

DynamX Coronary Bioadaptor System is CE Mark approved. ©2024 Elixir Medical. All rights reserved.



PMN 865 Rev C