

CASE STUDY

LONG CALCIFIC
LESION

DYNAMX

CORONARY BIOADAPTOR

CASE OVERVIEW

- Long Calcific Lesion treated with DynamX Coronary Bioadaptor
- Case performed by Antonio Colombo, MD, Humanitas Research Hospital, Italy
- Outcomes:
 - DynamX demonstrates acute performance similar to DES
 - With proper vessel preparation patient will experience the benefits of DynamX

PATIENT HISTORY

Demographics

- Age: 55 years old
- Gender: Male
- BMI: 32

Risk Factors

- Dyslipidemia
- HTN
- Ex smoker

Clinical History

- TURBT
- Asthma
- Angina and palpitations for the last few months

Diagnostic tests

- EKG: sinus rhythm
- TTE: preserved LVEF
- Minimal carotid artery intimal thickening
- Coronary CT: calcific mid-prox LAD disease

LESION AT BASELINE

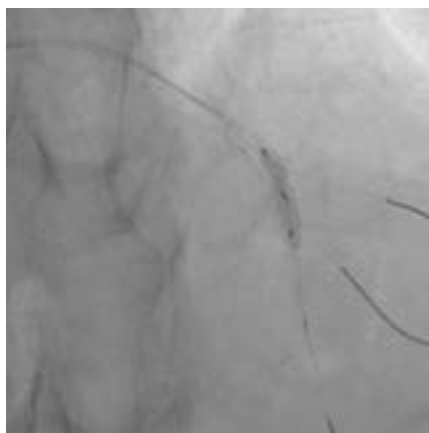
Mid LAD long calcific lesion



LESION PREPARATION

Wired the LAD and 2 diagonals for protection

Cutting Balloon 2.5 mm x 10 mm inflated 4 times to prepare the lesion



CASE STUDY
FOCAL CALCIFIC
LESION



BIOADAPTOR IMPLANT

DynamX bioadaptor 3.0 mm x 38 mm

Post dilation with non-compliant balloons 3.5 mm x 12 mm and 3.0 mm x 12 mm



FINAL RESULT



International (OUS) Use Only. CAUTION: The law restricts these devices to sale by or on the order of a physician. Indications, contraindications, warnings and instructions for use can be found in the product labeling supplied with each device. Case study offered by the physician is based on their experience and is at their discretion. Medical decisions for your patients are to be based upon their condition and your medical judgment.

Elixir and DynamX are registered trademarks in the US and internationally for Elixir Medical Corporation.

DynamX Coronary Bioadaptor System is CE Mark approved. ©2024 Elixir Medical. All rights reserved.



PMN 866 Rev C