

## CASE STUDY

OSTIAL / PROXIMAL  
OBTUSE  
MARGINAL

# DYNAMX

CORONARY BIOADAPTOR

## CASE OVERVIEW

- Ostial / Proximal Obtuse Marginal treated with DynamX Coronary Bioadaptor
- Case performed by Antonio Colombo, MD, Humanitas Research Hospital, Italy
- Outcomes:
  - DynamX demonstrates acute performance similar to DES

### PATIENT HISTORY

#### Demographics

- Age: 68 years old
- Gender: Male
- BMI: 25

#### Risk Factors

- Dyslipidemia
- HTN
- Ex smoker

#### Clinical History

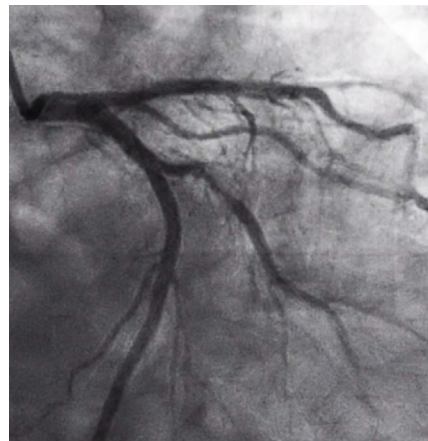
- S/p thrombolysis for inferior MI in 1998
- 4 months hx of angina CCS IV

#### Diagnostic tests

- EKG: sinus rhythm, ST strain in V5-V6
- TTE: inferior akinesia, preserved LVEF

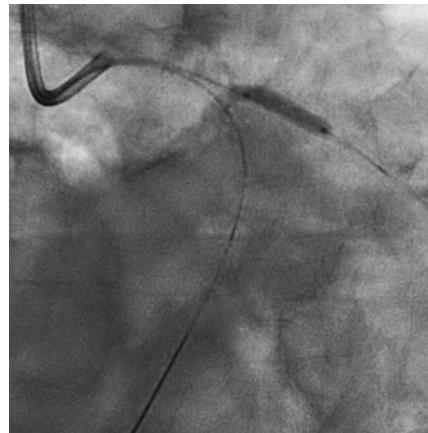
### LESION AT BASELINE

Ostial / Proximal Obtuse Marginal



### LESION PREPARATION

Wired the circumflex for protection and post dilation  
Predilation with semi-compliant balloon 2.5 mm x 20 mm



## CASE STUDY

OSTIAL / PROXIMAL  
OBTUSE  
MARGINAL

# DYNAMX

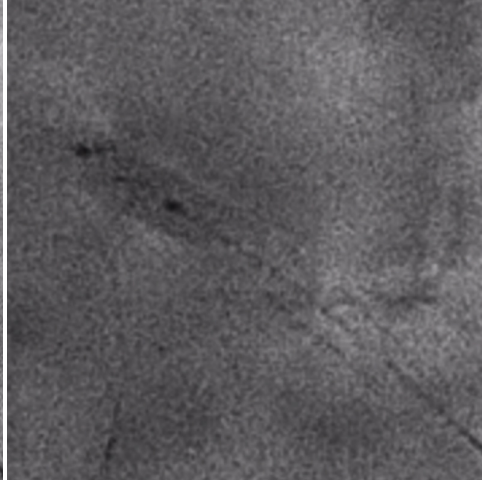
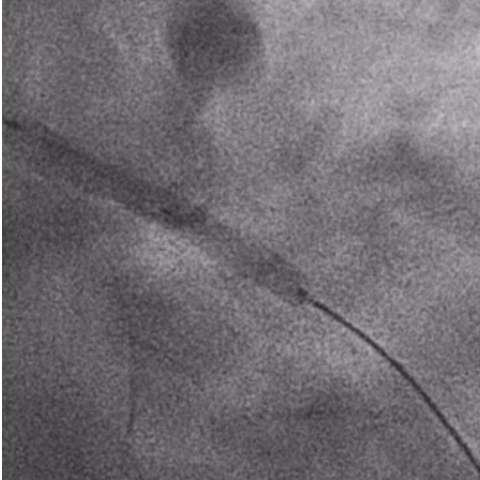
CORONARY BIOADAPTOR

### BIOADAPTOR IMPLANT

DynamX bioadaptor 3.0 mm x 28 mm

Post dilation with non-compliant balloon 3.5 mm x 8 mm

Final kissing balloon inflation with 2 non-compliant balloons 3.0 mm x 12 mm



### FINAL RESULT



International (OUS) Use Only. CAUTION: The law restricts these devices to sale by or on the order of a physician. Indications, contraindications, warnings and instructions for use can be found in the product labeling supplied with each device. Case study offered by the physician is based on their experience and is at their discretion. Medical decisions for your patients are to be based upon their condition and your medical judgment.

Elixir and DynamX are registered trademarks in the US and internationally for Elixir Medical Corporation.

DynamX Coronary Bioadaptor System is CE Mark approved. ©2024 Elixir Medical. All rights reserved.

**ELIXIR**  
MEDICAL CORPORATION

PMN 868 Rev C