

LITHIX

HERTZ CONTACT INTRAVASCULAR LITHOTRIPSY

Lithotripsy Without Limits





TRANSLATING FORCE

INTO ENERGY

LithiX Hertz Contact Intravascular Lithotripsy (HC-IVL), the first mechanical IVL platform, creates deep, wide cracks in lesions with eccentric, concentric, or nodular calcium without damaging soft tissue.



And while we make it look easy, the technology has been crafted and engineered to achieve highly effective outcomes. LithiX operates like a familiar balloon catheter but accelerates and maximizes **lithotripsy outcomes without requiring an external energy console.**

SAFE AND EFFECTIVE

In highly complex, severe calcification lesions¹:

No
intra-procedural
MACE

96.3%
residual stenosis < 30% without
intra-procedural MACE

113.7%
overall mean stent
expansion

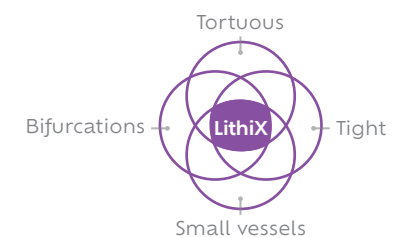
VERSATILE AND SIMPLE



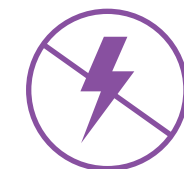
Eccentric, Concentric,
Nodular, Thick



Single LithiX for long lesions
and multiple vessels



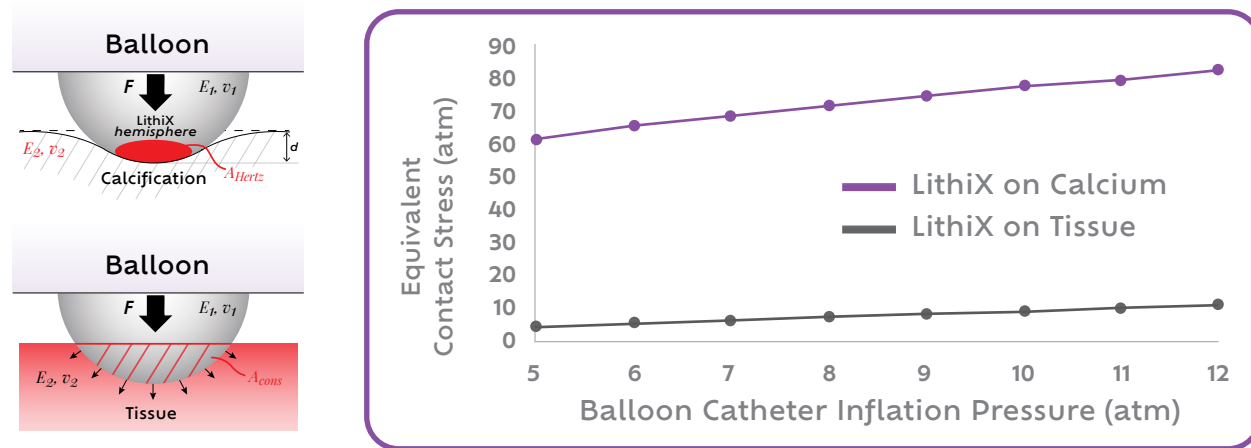
Confidently treat diverse anatomy



Shelf-to-patient solution

SAFE AND EFFECTIVE
HARD ON CALCIUM. SOFT ON TISSUE.

Hertz Contact Stress: Discrete and high stress for calcium fragmentation*



*Calculated forces: Hertz Contact stress formula

SIMPLE
GETTING TO THE LESION SHOULDN'T BE TORTURE.

The votes are in.
 Operator Post-Market Feedback³
 (n = 172)

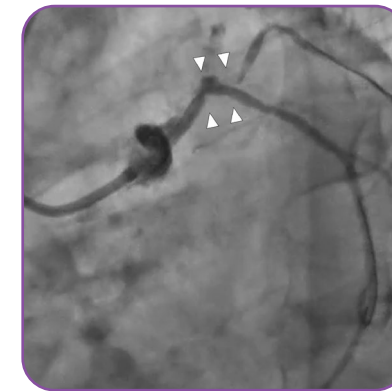


System track and flexibility: 4.7 average



Ease of crossing the lesion: 4.5 average

Case Example: LM/LCx severe angulation into and through calcific lesion

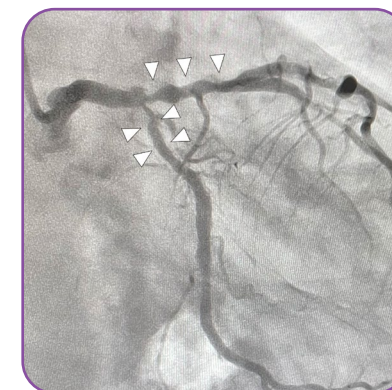


Pre-LithiX



Final Result

Case Example: severe calcification in multiple vessels treated with single LithiX device



Pre-LithiX



Final Result

LithiX consistently achieved excellent clinical success, even in high-risk, real-world population.^{1,2}

> 96% + No
 Angiographic success* Perforations or serious dissections†

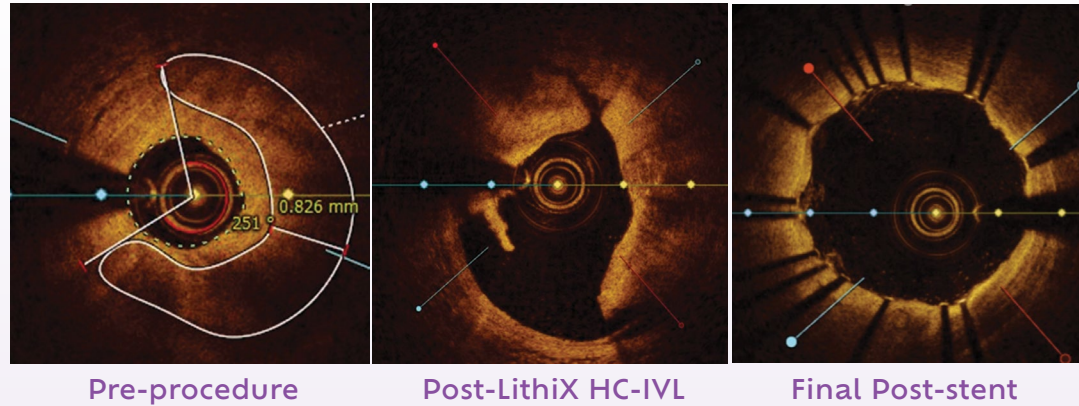
113.7% 6.89 mm²
 Overall mean stent expansion¹ mean minimum stent area¹

†Perforation occurred in one subject during stent deployment (not HC-IVL related)

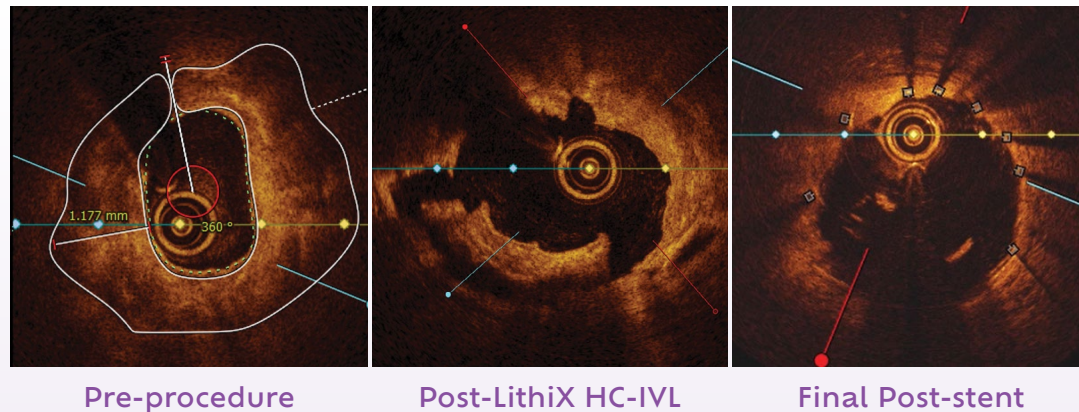
VERSATILE LITHOTRIPSY WITHOUT LIMITS

LithiX can be used in **lesions with eccentric, concentric, and nodular calcium**, producing a multitude of visible cracks.

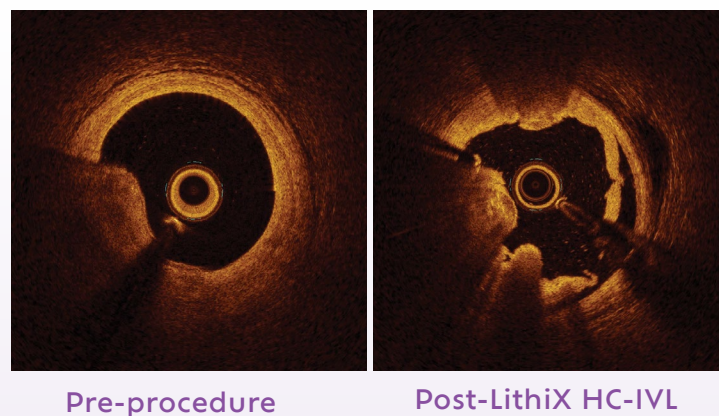
Eccentric calcified lesions



Concentric calcified lesions



Lesions with nodules



LithiX provides ultimate freedom and flexibility – to consistently **achieve maximum stent expansion**.

Mean Stent Expansion at Minimum Stent Area[‡]

The PINNACLE I Study

The MY-IVL Post-Market Study

Eccentric calcified lesions: $\leq 270^\circ$

101.38%

$\geq 106.77\%$

Concentric calcified lesions: $> 270^\circ$

93.95%

110.96%

Percent of total lesions involving a calcified nodule

28.1%

10.3%

[‡]Evaluated by independent core lab by OCT or IVUS; PINNACLE I imaging subset (L=32), MY-IVL (L=103)
EAPCI Consensus Document: Target minimum stent area (MSA) >80% relative to average reference lumen area following stent optimization⁴

TECHNICAL SPECIFICATIONS

LithiX HC-IVL Catheter	
Available Balloon Nominal Diameters	2.0, 2.5, 3.0, 3.5, 4.0 mm
Balloon Nominal Length	14 mm
Catheter Working Length	140 cm
Catheter Design	Rapid Exchange
Distal Outer Shaft OD	2.7 FR / 0.89 mm
Intermediate Shaft OD	2.5 FR / 0.85 mm
Hypotube OD	1.95 FR / 0.65 mm
Guiding Catheter Compatibility	6 French (\geq 0.071 in ID or 1.8 mm ID)
Guidewire Compatibility	0.014 in / 0.36 mm
Tip Entry Profile	0.017 in / 0.43 mm
Crossing Profile (2.0 mm – 4.0 mm diameters)	0.046 in – 0.061 in / 1.17 mm – 1.55 mm / 3.5 FR – 4.6 FR

COMPLIANCE CHART

Inflation	Balloon Outer Diameter (mm)				
	ATM	2.0 mm	2.5 mm	3.0 mm	3.5 mm
5 [NOM]	2.06	2.57	2.99	3.59	4.03
6	2.09	2.61	3.04	3.65	4.10
7	2.12	2.65	3.09	3.70	4.16
8	2.15	2.69	3.14	3.76	4.21
9	2.18	2.72	3.18	3.80	4.26
10	2.20	2.75	3.21	3.83	4.31
11	2.22	2.77	3.24	3.86	4.35
12 [RBP]	2.24	2.79	3.27	3.88	4.40

LithiX Diameter

2.0 mm	2.5 mm	3.0 mm	3.5 mm	4.0 mm
DAR2014	DAR2514	DAR3014	DAR3514	DAR4014

Not all sizes available in all geographies.

References

- Muthusamy TS, et al. Hertz contact intravascular lithotripsy for calcified coronary lesions in real-world practice: Primary outcomes of the MY-IVL post-market study. Cardiovasc Revasc Med. 2026
- Verheye S, et al. Hertz contact intravascular lithotripsy for calcified coronary artery disease: the PINNACLE-I trial. EuroIntervention. 2026
- LithiX HC-IVL Post-market Case Survey. Data on file.
- Räber L, et al. Clinical use of intracoronary imaging. Part 1: guidance and optimization of coronary interventions. An expert consensus document of the European Association of Percutaneous Cardiovascular Interventions. EuroIntervention. 2018.